



ALK[®]

AL KHUSHBU[®]

ZAHRA RUBAB
VOL-2

ZAHRA RUBAB VOL-2



ALK-6024

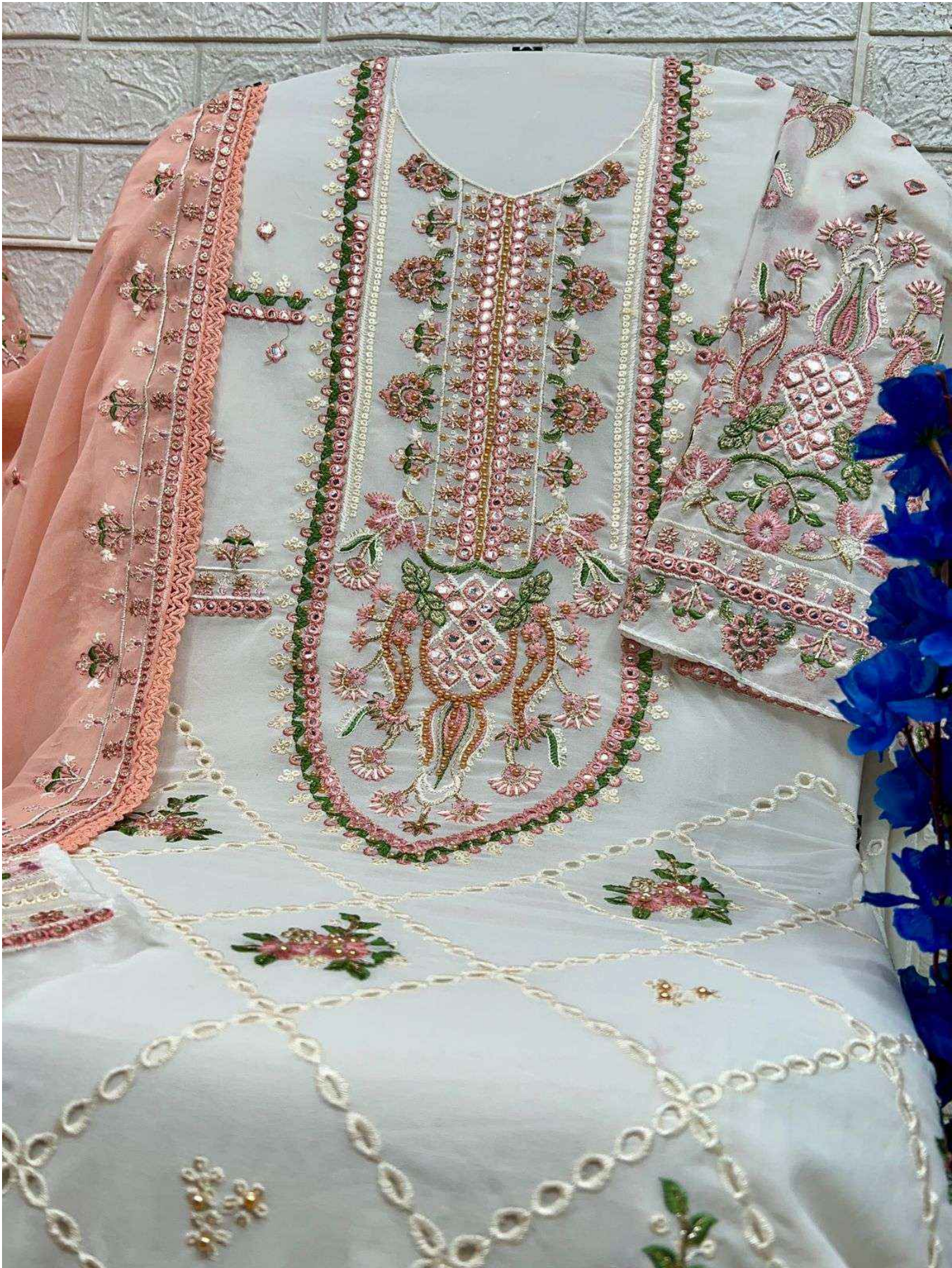


ALK-6025



ALK-6026







**Back
Work**







**Back
Work**

















ALK[®]
AL KHUSHBU[®]

ALK-6026

- TOP** Fox Georgette with Heavy Embroidery (cut 2.50)
- BOTTOM-INNER** Dull Santoon (cut 4.25)
- DUPATTA** Fox Georgette with Heavy Embroidery (cut 2.40)

CARE INSTRUCTIONS

- ☐ Dry clean only
- ⚠ Do not use any bleach or stain removing chemical
- ☐ Iron the fabric at moderate temperature
- ☒ Do not dry fabric in direct sunlight

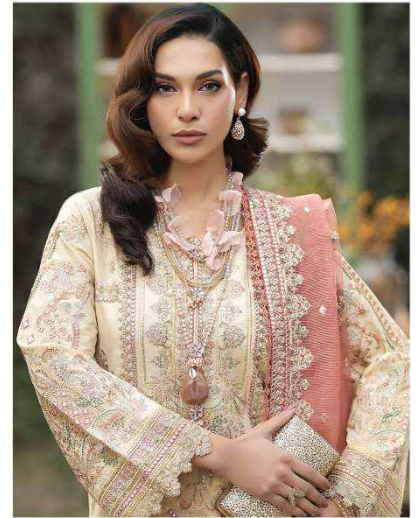


ALK-6025

- TOP** Fox Georgette with Heavy Embroidery (cut 2.50)
- BOTTOM-INNER** Dull Santoon (cut 4.25)
- DUPATTA** Fox Georgette with Heavy Embroidery (cut 2.40)

CARE INSTRUCTIONS

- ☐ Dry clean only
- ⚠ Do not use any bleach or stain removing chemical
- ☐ Iron the fabric at moderate temperature
- ☒ Do not dry fabric in direct sunlight



ALK[®]
AL KHUSHBU[®]

ALK-6024

- TOP** Fox Georgette with Heavy Embroidery (cut 2.50)
- BOTTOM-INNER** Dull Santoon (cut 4.25)
- DUPATTA** Fox Georgette with Heavy Embroidery (cut 2.40)

CARE INSTRUCTIONS

- ☐ Dry clean only
- ⚠ Do not use any bleach or stain removing chemical
- ☐ Iron the fabric at moderate temperature
- ☒ Do not dry fabric in direct sunlight



ALK[®]

AL KHUSHBU[®]

ZAHRA RUBAB
VOL-2

ZAHRA RUBAB VOL-2



ALK-6024



ALK-6025



ALK-6026